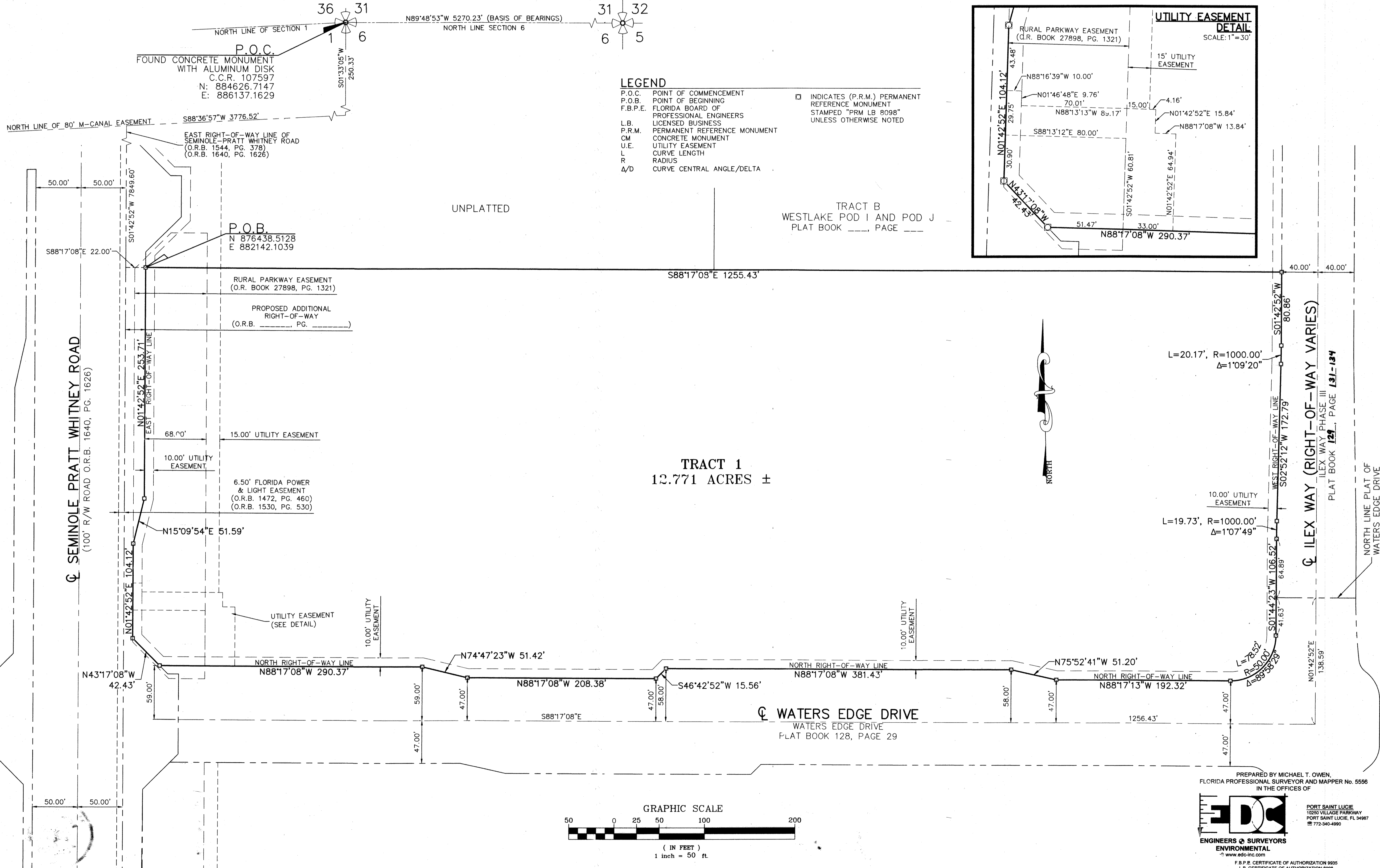


CHRIST FELLOWSHIP CHURCH, INC.

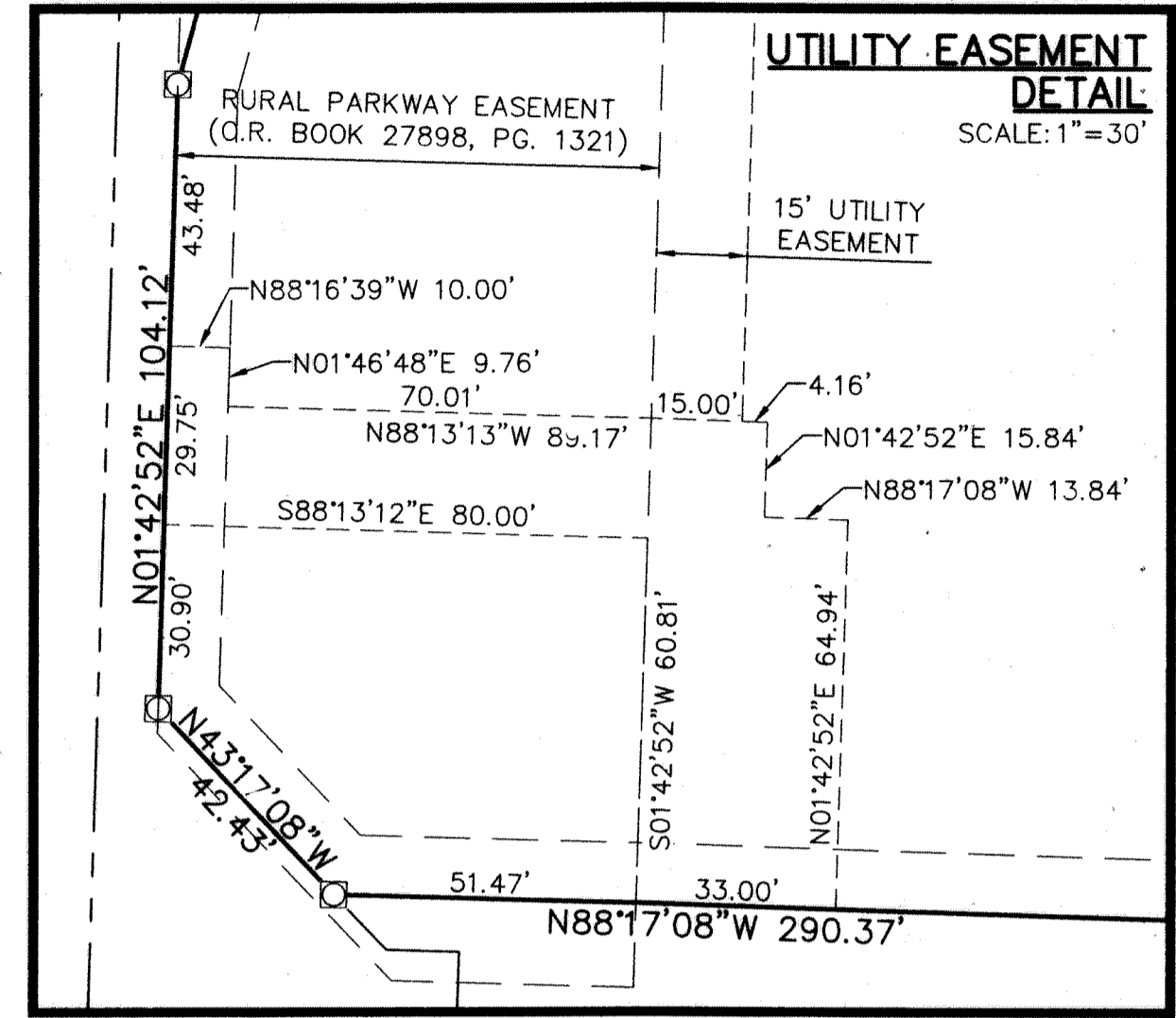
A SUBDIVISION BEING IN PART A REPLAT OF ALL OF O.S.T. #1, WATERS EDGE DRIVE, PLAT BOOK 128, PAGES 29 AND 30 AND A PORTION OF O.S.T.#1, ILEX WAY PHASE III, PLAT BOOK 129, PAGES 131-134 THROUGH _____ INCLUSIVE, BOTH IN THE PUBLIC RECORDS OF PALM BEACH COUNTY, FLORIDA LYING IN SECTION 12, TOWNSHIP 43 SOUTH, RANGE 40 EAST, CITY OF WESTLAKE, PALM BEACH COUNTY, FLORIDA.

139



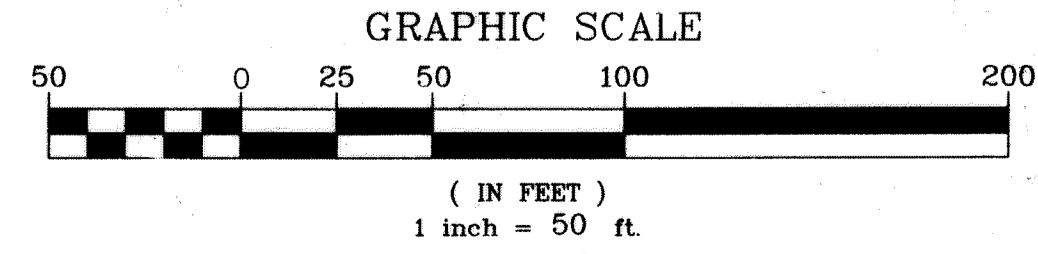
LEGEND

- P.O.C. POINT OF COMMENCEMENT
- P.O.B. POINT OF BEGINNING
- F.B.P.E. FLORIDA BOARD OF PROFESSIONAL ENGINEERS LICENSED BUSINESS
- L.B. LICENSED BUSINESS
- P.R.M. PERMANENT REFERENCE MONUMENT
- CM. CONCRETE MONUMENT
- U.E. UTILITY EASEMENT
- L. CURVE LENGTH
- R. RADIUS
- Δ/D. CURVE CENTRAL ANGLE/DELTA
- INDICATES (P.R.M.) PERMANENT REFERENCE MONUMENT STAMPED "PRM LB 8098" UNLESS OTHERWISE NOTED



L=20.17', R=1000.00'
Δ=1°09'20"

L=19.73', R=1000.00'
Δ=1°07'49"



PREPARED BY MICHAEL T. OWEN,
FLORIDA PROFESSIONAL SURVEYOR AND MAPPER No. 5556
IN THE OFFICES OF



PORT SAINT LUCIE
10250 VILLAGE PARKWAY
PORT SAINT LUCIE, FL 34987
772-340-4990

F.B.P.E. CERTIFICATE OF AUTHORIZATION 8835
L.B. CERTIFICATE OF AUTHORIZATION 8098

THIS DOCUMENT, TOGETHER WITH THE CONCEPTS AND DESIGNS PRESENTED HEREIN, AS AN INSTRUMENT OF SERVICE IS INTENDED ONLY FOR THE SPECIFIC PURPOSE AND CLIENT FOR WHICH IT WAS PREPARED. REUSE OF AND IMPROPER RELIANCE ON THIS DOCUMENT WITHOUT WRITTEN AUTHORIZATION AND ADOPTION BY EDC, INC. SHALL BE WITHOUT LIABILITY TO EDC, INC.